



Mission Statement

In recent years the list of our partner countries has stabilized and the list of sectors that receive financial support from Luxembourg has become more concise. Meanwhile, the overall volume of our work has remained stable and the Luxembourg Development Cooperation intervenes in increasingly complex partnership frameworks.

LuxDev as operational pillar of the Luxembourg bilateral cooperation has fully grasped the magnitude of these issues. Our Agency thus elaborated its VISION 2020 along those lines in 2012.

Our mission is to actively participate in the implementation of the development cooperation policy of the Luxembourg government, which focuses on poverty eradication and sustainable development in its social, economic and environmental aspects. As an agency of the Luxembourg government, LuxDev can be seen as the essential instrument by which the country expresses its international solidarity.

In the field, LuxDev aims at strengthening their partner countries' ownership, i.e. their ability to exercise effective control over their own policies and development strategies, ensuring effective coordination of the development support provided by all technical and financial partners. LuxDev, in each of its interventions seeks to act as a reliable partner and develop the capacities of actors with whom the Agency cooperates. To this end LuxDev adopts development approaches that are compatible with the principles of international agreements, which in turn are consistent with the mandates entrusted by the Directorate for Development Cooperation of the Luxembourg Ministry of European and Foreign Affairs.



We seek to assist our partners, without substituting them in their efforts to progress.

To this end, our agency develops its skills in different sectors and topics as well as in the context of different development approaches and modalities. The Agency also has, in recent years, acquired analytical skills, which put its decisions into perspective in terms of risks and opportunities.

At international level, LuxDev is active in the research being conducted by its peers and takes part in international networks, particularly in Europe, where its expertise has proven to be useful. Our Agency makes use of operational collaboration opportunities, particularly in the context of the EU Code of Conduct on Complementarity and Division of Labour in Development Policy. This is why LuxDev has become a member of major networks such as the Practitioners' Network and the Learn4Dev network.

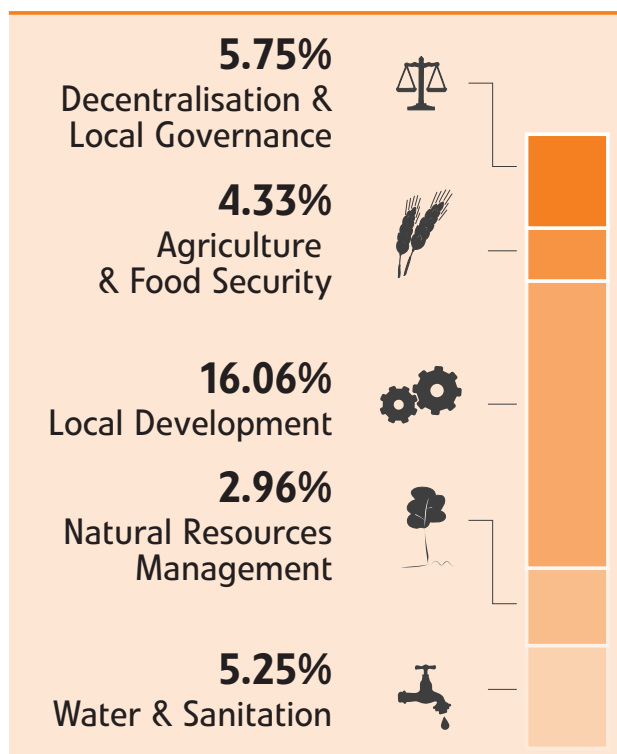
LuxDev will actively pursue its efforts to remain a reliable and competent partner of the Luxembourg government. A clear definition of roles between our Agency and the Directorate for Development Cooperation, with a clearly structured system, obvious responsibilities and well-defined expertise, continue to ensure the effectiveness of Luxembourg's bilateral development cooperation.



Total amount of disbursements in 2014 : **89,434,177 EUR**

Distribution by sector of disbursements in 2014

34.35%
Local Development



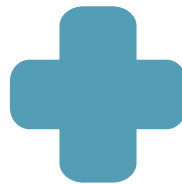
0.96%
Microfinance &
Financial Sector





6.18%

Various



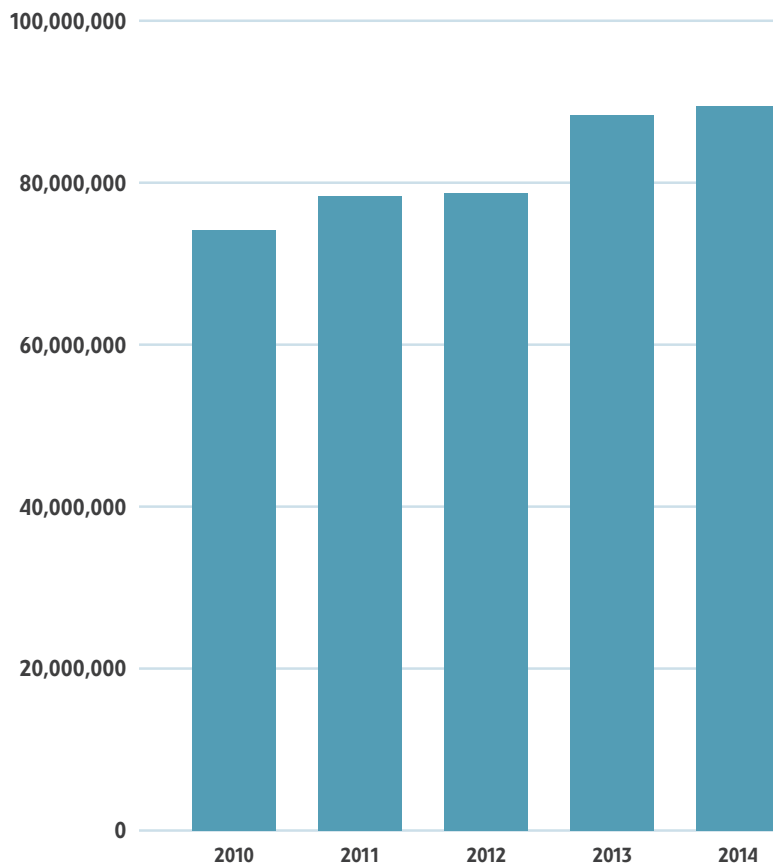
19.66%

Health



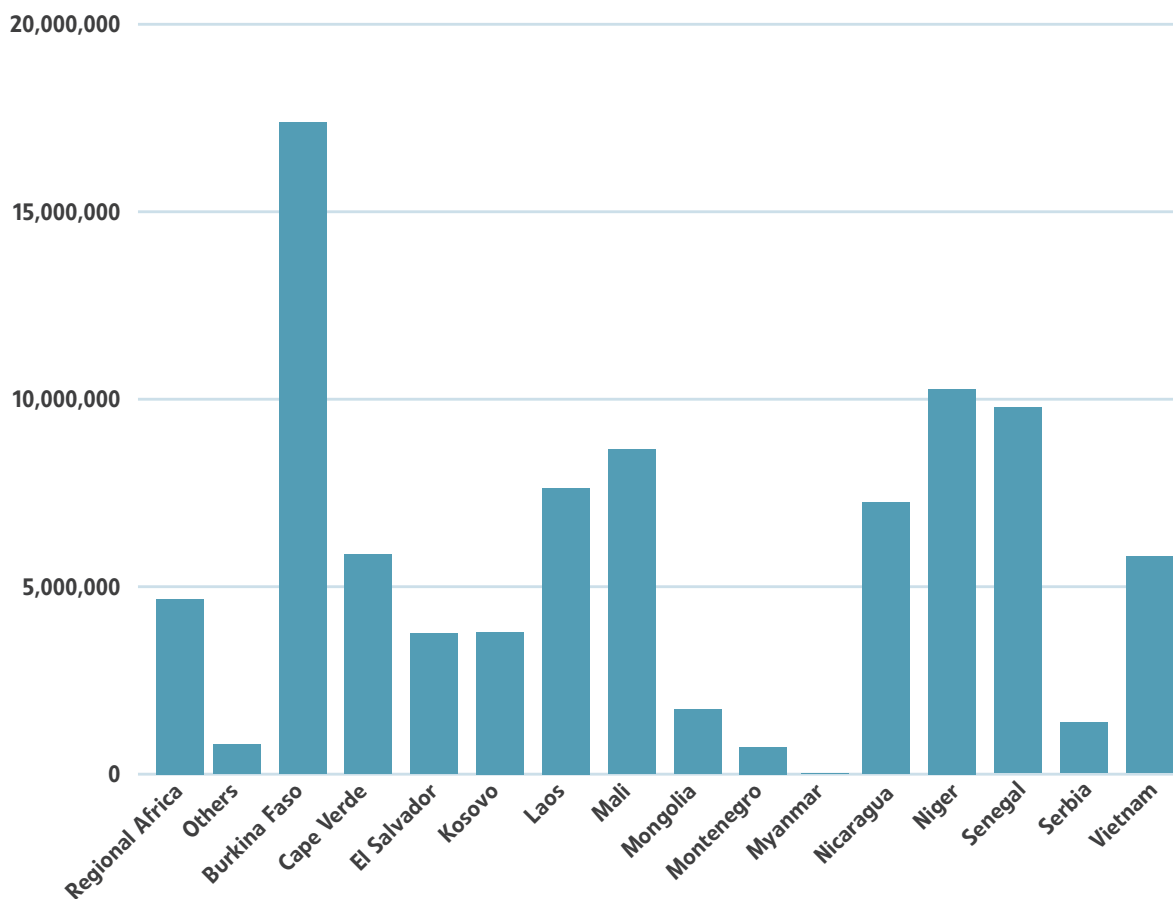
38.85%

Education -
Vocational Training &
Access to Employment



Evolution of LuxDev's disbursements

Summary of disbursements in 2014 by country





LuxDev

Regional Offices

Pristina
Kosovo
Montenegro
Serbia

Dakar
Senegal
Mali

Managua
Nicaragua
El Salvador

Praia
Cape Verde

Ouagadougou
Burkina Faso
Niger

DAKAR

B.P. n° 29920
Lot 43, route de l'aéroport
Yoff Aéroport
Dakar - **SÉNÉGAL**

E: rof.dak@luxdev.lu
T: (221) 33 869 64 41
F: (221) 33 820 60 64

HANOI

Unit 1402
Pacific Place
83-B Ly Thuong Kiet
Hanoi - **VIETNAM**

E: rof.han@luxdev.lu
T: (84) 43 946 1402
F: (84) 43 946 1400

MANAGUA

Bolonia. Del Hospital Militar 1c al norte 1 -
1/2 c. al Oeste. Contiguo al Hotel Maracas
Inn. A.P. 3336
Managua - **NICARAGUA**

E: rof.man@luxdev.lu
T/F: (505) 2266 8347



Hanoi
Vietnam
Laos
Myanmar

OUAGADOUGOU

B.P. n° 513

Ouagadougou 11
BURKINA FASO

E: rof.oua@luxdev.lu
T: (226) 50 30 15 04
F: (226) 50 30 15 09

PRAIA

B.P. n° 458
Largo do Ténis - Platô
Praia
CAP-VERT

E: rof.pra@luxdev.lu
T: (238) 2 62 47 37/38/39
F: (238) 2 62 47 40

PRISTINA

Rr. Metush Krasniqi 14
(Dragodan)
Pristina
KOSOVO

E: rof.blk@luxdev.lu
T: (381) 38 226 780







A 10, rue de la Grève L-1643 Luxembourg



Station Veloh
«Rousegäertchen» at 50 m



Parking «Martyrs» in
front of LuxDev



Bus stop «Paris/Zitha»
or «Martyrs»



Lux-Development
BP 2273
L-1022 Luxembourg

T +352 29 58 58 1
F +352 29 58 58 200
E ask@luxdev.lu

www.luxdev.lu